



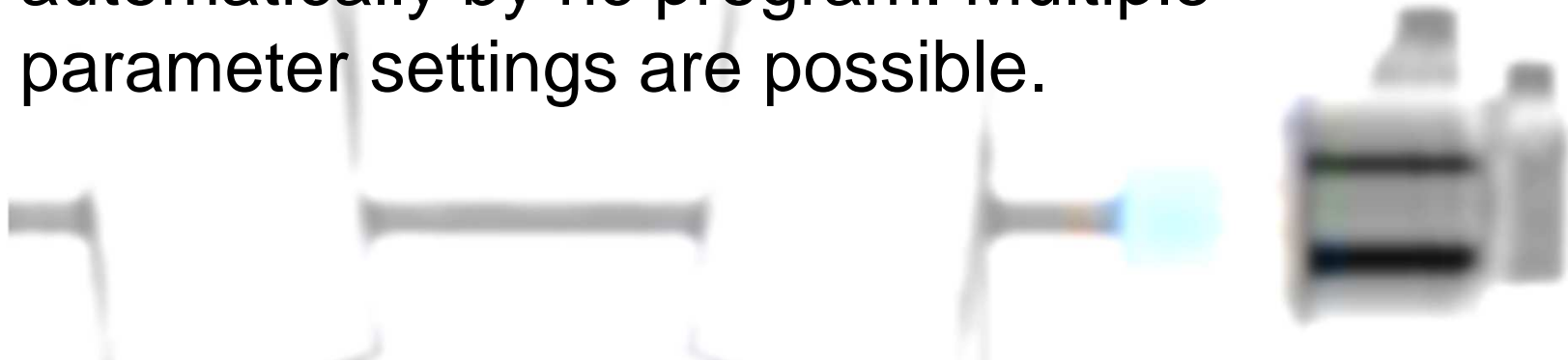
Laser specific Interfaces

Laser control interface

- Support of IPG Fiber laser through DIO Interface
- Direct access to Laser Power and other Laser parameter
- Setup of Laser parameter manually through HMI and automatically by nc program. Multiple parameter settings are possible.

Sensor control interface

- Support of Precitec Interface through Profibus
- Precitec MC8610 Lasermatic® Z
- Precitec PYR30 cutting head
- Precitec Z axis LD30C D50
- Setup of Sensor parameter through HMI and automatically by nc program. Multiple parameter settings are possible.



Laser power control depending from speed

- Support of IPG Fiber laser through DIO Interface
- Auto adjustment of Laser Power depending from actual speed (3.5ms PLC interrupt)
- Customization of different Control Pattern

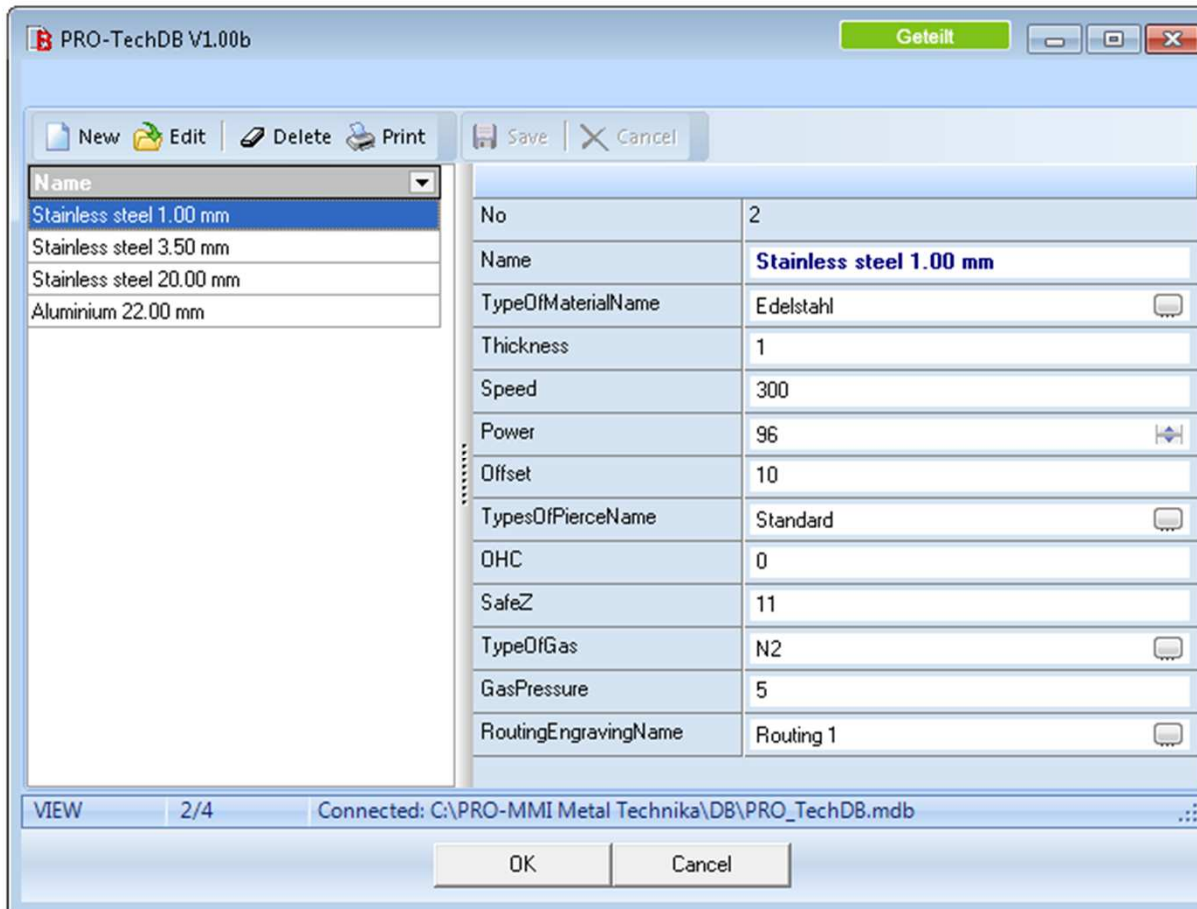


Laser custom Interfaces



- Basic 64 DI / 48 DO, expandable
 - Analog output / Analog input
 - Profibus
 - CC-Link
 - Ethernet
 - Skip Interface for measurement
 - RS232
-
- PLC
 - Advanced PLC (C-Language)
 - User Macro Interface (Access to NC Parameter)
 - Local / Global Variables
-
- Technology Database Designer
 - Scripting Formular / Dialog Designer

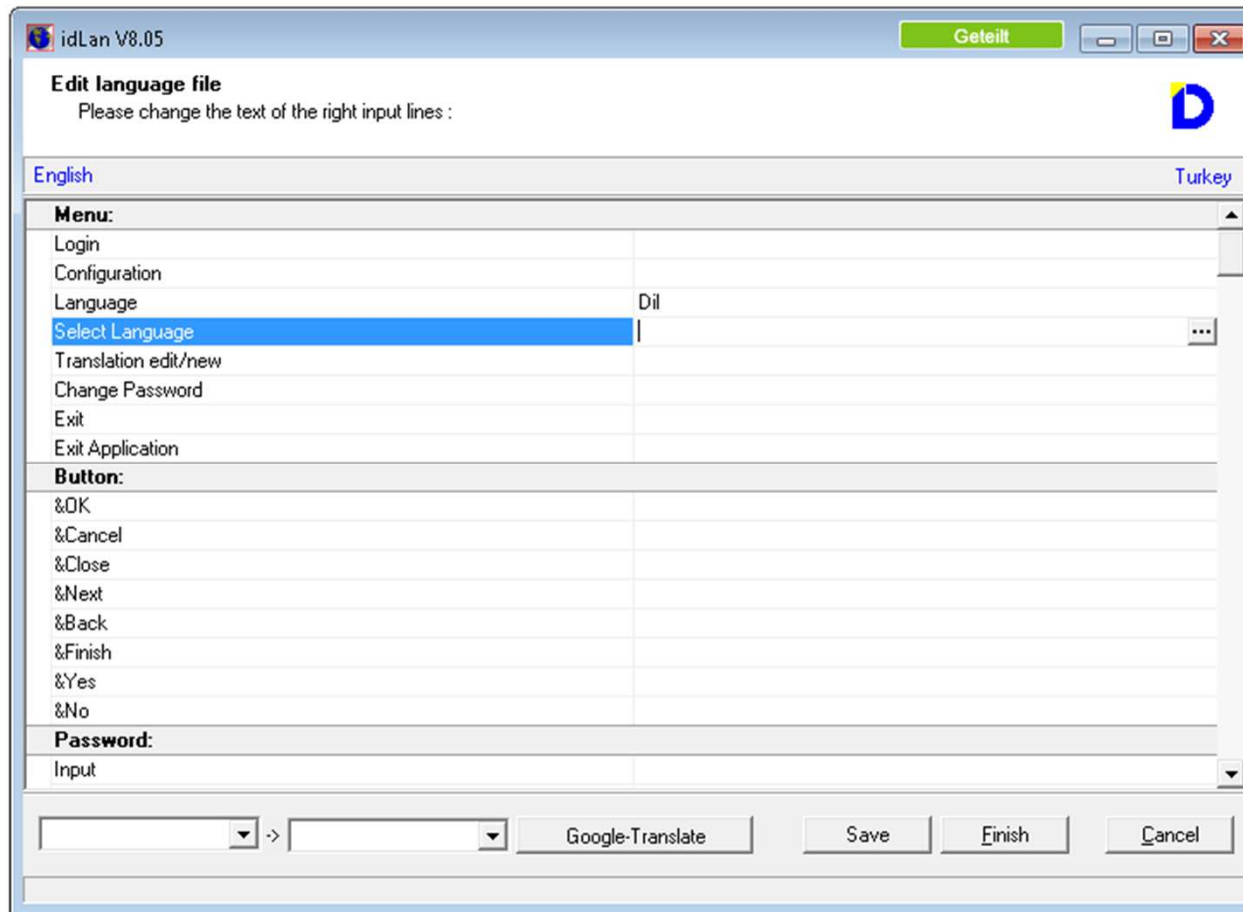
Laser Parameter Database



Parameters for: Stainless steel 1.00 mm	
No	2
Name	Stainless steel 1.00 mm
TypeOfMaterialName	Edelstahl
Thickness	1
Speed	300
Power	96
Offset	10
TypesOfPierceName	Standard
OHC	0
SafeZ	11
TypeOfGas	N2
GasPressure	5
RoutingEngravingName	Routing 1

Database can be fully customized

Integrated Translation Tool



PRO-MMI can be translated into every language